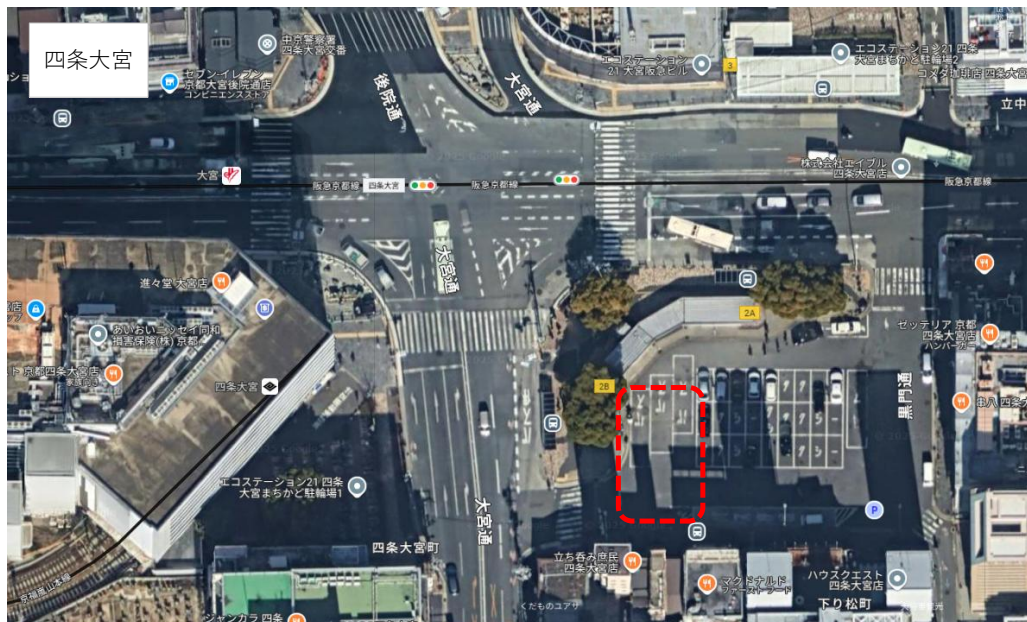
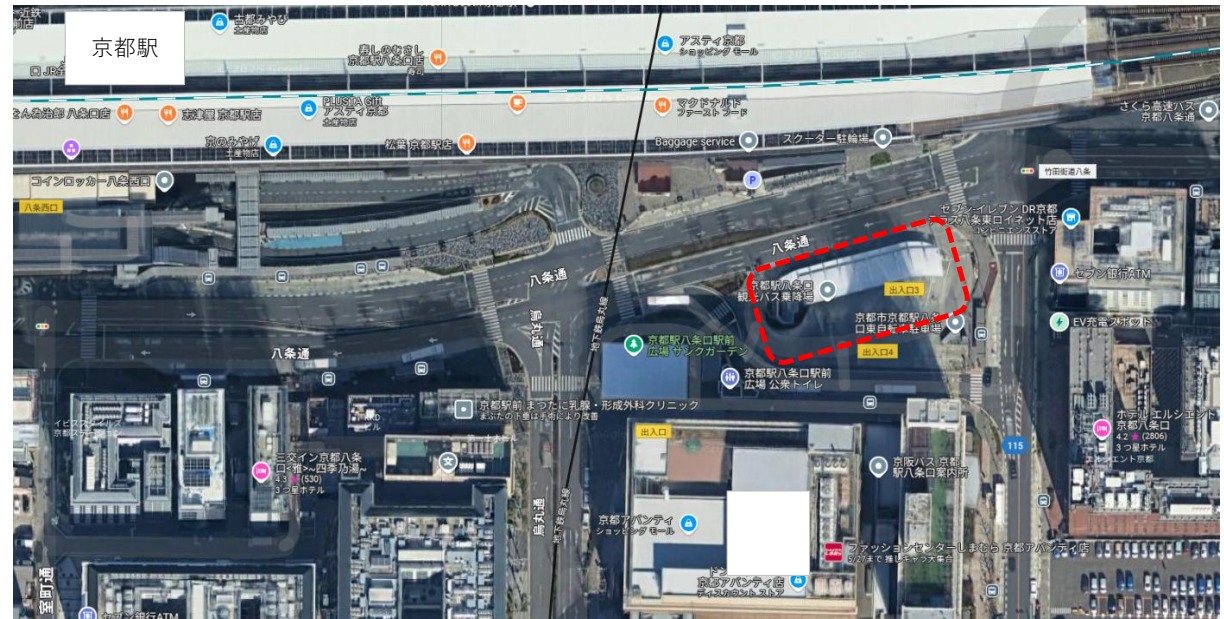


The map shows the area around JR Kyoto Station. Key locations include:

- 下京区役所** (Shimo-kyōgu-chiyō-sho)
- 京都タワー** (Kyōto Tower)
- 堀小路通** (Hori-kochi-dōri)
- JR 京都駅** (JR Kyōto Station)
- 丸太町通** (Maruta-chō-dōri)
- 八条通** (Yachō-dōri)
- 竹田街道八条** (Takeda-kaidō Yachō)
- 河原町八条** (Kawaranchō Yachō)
- 八条油小路** (Yachō-abura-kochi)
- 臨時降車場** (Temporary Drop-off Area)
- 京都駅八条口貸切バス乗降場** (Kyōto Station Yachō-guchi Charter Bus Boarding/Alighting Area) (金期間および5・6月 ツアー専用)
- 油小路通** (Abura-kochi-dōri)
- 宝町通** (Takamachi-dōri)
- 烏丸通** (Karasuma-dōri)
- 竹田街道** (Takeda-kaidō)
- 河原町通** (Kawaranchō-dōri)
- 九条通** (Kūjō-dōri)
- 九条油小路** (Kūjō-abura-kochi)
- 九条烏丸** (Kūjō-karasuma)
- 九条河原町** (Kūjō-kawaranchō)

 A red dashed line indicates the bus route from the station area, through the Yachō intersection, and along the Yoda-dōri street to the temporary drop-off area.



※京都駅の乗降は完全予約制になります。

※四条大宮については予約制ではありませんので、順での配車になります。